

GALERIE ZIMMERMANN & KRATOCHWILL

BIOGRAPHIE HONG SOUN

Hong Soun

1959 Born in Seoul, Korea

1983 B. F. A. in Art education, Busan National University, Busan, Korea

1989 École National Supérieure des Beaux-Arts, Paris. France

Exhibitions, projects (2000-2016)

2016

We Create Things, Things Create Us, Changwon Sculpture Biennale

2016, South Gyeongsang (KR)

Translateral Landscapes, NON Berlin (DE)

Forget-Me-Not, Galerie Zimmermann Kratochwill, Graz (AT)

Manila. Feb. 2016., 1335MABINI, Manila (PH) (solo)

Made in Seoul, Abbaye St-Andre Centre d'art contemporain, Meymac (FR)

Looking for secret, The Texas project, Seoul (KR)

MV Sewol Memorial Exhibition, April the Eternal Voyage, Gyeonggi Museum of Modern Art, Gyeonggi-do (KR)

Reminiscing on past times, Youngeun Museum of Contemporary Art, Gyeonggi-do (KR)

Daemon Kim, Hello Museum, Seoul (KR)

Solo exhibition, Jeon Hyuck lim Museum of Art, Yongyeong (KR)

2015

Artist's Portfolio, Savina Museum, Seoul (KR)

Somewhere out There, Korean Cultural Center, Manila (PH)

Momentum: Art/Omi, Total Museum of Contemporary Art, Seoul (KR)

Deep grief in the dream-a three color blossom, Zaha Museum, Seoul (KR)

Ordinary Monument, Corner Art Space, Seoul (KR) (solo)

Nolisizak, Hello Museum, Seoul (KR)

2014

Unbearable Lightness of Being, Finale Gallery, Manila (PH)

NEO-SANSU, Daegu Art Museum, Daegu (KR)

The Margins of Spectacle, Mimesis Art Museum, Paju (KR) (solo)

King Sejong the Great Opens the Age of Hangeul Culture, National Hangeul Museum, Seoul, (KR)

2013

Slow art, Art space with Artist, Heyri (KR)

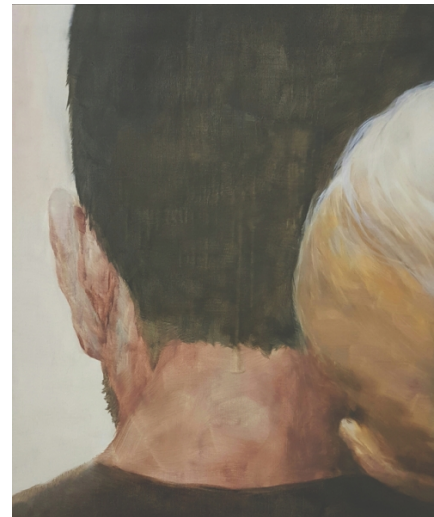
Bingo, Sejong Center, Seoul (KR)

Play, Seoul Art Center, Seoul (KR)

The Future of Museum, Ulsan culture art center, Ulsan (KR)

Scenes vs Scenes, Buk Seoul Museum of Art, Seoul (KR)

2012



New York June 13.2016 | 2016 | Öl auf Leinwand | 60 x 50 cm



Pieces of Sewol | 2016 | Öl auf Leinwand | 190 x 332 cm



Epu'lu. March 21.2010 | 2016 | Öl auf Leinwand | 160 x 190 cm

Savina Museum of Contemporary Art, Seoul (KR) (solo)
Vers la Lumiere, Youngeun Museum of Contemporary Art, Gyeonggi-do (KR)
WOORI-The Poetic Intervention - Tina B Prague Contemporary Art Festival, Dominikanska 8 at the St. Giles Dominican Priory, Prague (CZ)
CAGE 100, Festival (Eisenbahn, Leipzig (DE)
DMZ Peace Project, Gyeonggi-do Museum of Art, Gyeonggi-do (KR)

2011

-Up and Comers, Total Art Museum, Seoul (KR)
Breathing-Inhalation & Exhalation, Gallery Being, Seoul (KR)
The new epicenter, Wumin art center, Cheongju (KR)

2010

Close Encounter, Jeju Museum of Art, Jeju-do (KR)
Space CAN, Seoul (KR) (solo)
Let's Imagine, Gallery Bundo, Daegu, (KR)
The more, the better, Sun Gallery, Seoul, (KR)
Him of Gyeonggido, Gyeonggi Museum of Modern Art, Gyeonggi-do (KR)
Puzzling (a) Space, Hillyer Art Space, Washington DC (US)

2009

Up and Comers, Total Art Museum, Seoul (KR)
Land Balance, Seo Gallery, Seoul (KR)
Double ACT : 01, Savina Museum of Contemporary Art, Seoul (KR)
Layered City, Gallery Artside, Beijing (CN)
Art in Haje, Gallery Bundo, Daegu (KR)
Ssamzie Space. Seoul (KR) (solo)
Gallery Dot, Ulsan (KR) (solo)

2008

Santa Fe international Biennial, SITE Santa Fe, Santa Fe (US)
Busan International Biennale, Busan Museum of Modern Art, Busan (KR)
The World of Expression, Seoul Arts Center, Seoul (KR)
Meme Trackers, Songzhuang Art Center. Beijing (CN)
Reconstructed, Gyeonggi Museum of Modern Art, Gyeonggi-do (KR)

2007

Seo Gallery, Seoul (KR) (solo)
Future is Haje, Neuer Kunstverein, Aschaffenburg (DE)
Reminiscing the medium-a 'post-' syndrome, MoA, Seoul (KR)
Les Amis de la Cinematheque, Gallery Artside, Seoul (KR)
The Shopping Fete for Collector, Gallery Bow, Ulsan (KR)

2006

Sensuous Panorama, Lounge Gallery, London (UK)
Wake up Andy Warhol (Gallery Ssamzie, Seoul (KR)
SEO + LOVE + MEMORY, Seo Gallery, Seoul (KR)

2005

Le Droit de Reve, Hyundai Department Store, Seoul (KR)
Kulaydiwa Gallery, Manila (PH) (solo)
Contempong Pinas, Kulaydiwa Gallery, Manila (PH)

2004

3rd MAPP, Space-T, Hyunjacso, Seoul (KR)
Over the Rainbow, Space C, Seoul (KR)

Heyri Festival, Heyri, Gyeonggi-do (KR)
Gallery Ssamzie, Seoul (KR) (solo)
Stillness & Movement, Seoul Olympic Art Museum, Seoul (KR)
Center & Composition (Seoul Arts Center, Seoul (KR)

2003

-REAL-SCAPE Revisited, National Museum of Contemporary Art,
Gwacheon (KR)
Mindscape, Gallery Hyundai plus, Seoul (KR)

2002

WATER walks, Ise cultural Foundation, New York (US)
Korean Air France, Glass box, Paris (FR)
Korean Air France, Ssamzie Space, Seoul (KR)
Our house, Daring Art Foundation, Seoul (KR)
Borders and Change, Nakatsue YMCA, Nakatsue (JP)
Gwangju Biennale, Namgwangju Station, Gwangju (KR)
Neo Painting, Youngeun Museum of Contemporary Art. Gyeonggi-do,
Korea)

2001

The 1980's Realism and The Age, Gana art center, Seoul (KR)
Art and Life, Gallery Hyundai, Seoul (KR)
Work 2001-su, mok, geum, to, seng, Insa Art Center, Seoul (KR)

2000

Leaving the Island-PICAF, Busan Museum of Art, Busan (KR)
Art Museum in Image, Fine Art Center, Seoul (KR)
Sculpture Amusement Park, Sungkok Art Museum, Seoul (KR)
The Web of Life, Sungkok Art Museum, Seoul (KR)
The Factory Art Festival-Blind Love, Sampyo Factory, Seoul (KR)